

Laser Printer Series

Windows Vista™ Installation Guide

Before you can use the printer, you must set up the hardware and install the driver. Please read the 'Quick Setup Guide' and this 'Windows Vista™ Installation Guide' for proper set up and installation instructions.

STEP 1

Setting Up the Machine

Please follow the steps in STEP 1 Setting Up the Machine in the Quick Setup Guide first. Then return to STEP 2 Installing the Printer Driver in this installation guide.



STEP 2

Installing the Printer Driver

Please follow the steps in this Windows Vista™ Installation Guide for proper printer driver installation instructions.



Setup is Complete!










How to use the printer, see the User's Guide on the CD-ROM.

Keep the 'Quick Setup Guide', 'Windows Vista™ Installation Guide' and the supplied CD-ROM in a convenient place for quick and easy reference at all times.



Symbols used in this guide

 Warning	 Electrical Hazard	 Hot Surface	 Caution
<p>Warnings tell you what to do to prevent possible personal injury.</p>	<p>Electrical Hazard icons alert you to a possible electrical shock.</p>	<p>Hot Surface icons warn you not to touch machine parts that are hot.</p>	<p>Cautions specify procedures you must follow or avoid to prevent possible damage to the printer or other objects.</p>
 Improper Setup	 Note	 Quick Setup Guide	
<p>Improper Setup icons alert you to devices and operations that are not compatible with the printer.</p>	<p>Notes tell you how you should respond to a situation that may arise or give tips about how the current operation works with other features.</p>	<p>Indicates reference to the Quick Setup Guide.</p>	

Before Starting

Before using this manual.....	2
Supplied CD-ROM for Windows Vista™	2

Installing the Printer Driver

Windows®

For USB interface cable users	4
For parallel interface cable users	6
For network interface cable users	8
For Peer-to-Peer network printer users	8
For shared network printer users	10

For Network Users

BRAdmin Light utility	12
Installing the BRAdmin Light configuration utility	12
Setting your IP address, Subnet Mask and Gateway using BRAdmin Light	12

Other Information

Computer requirements	13
-----------------------------	----

Before using this manual

This manual is for Windows Vista™ users only. This installation guide explains how to install the printer driver for Windows Vista™ and other information about Windows Vista™. Before installing the printer driver, please follow the steps in the **Getting Started** section and **STEP1 Setting Up the Machine** in the Quick Setup Guide. After you complete the initial setup, follow the steps in this guide for installing the printer driver. You can also find other information about the machine in the Quick Setup Guide.



See the Quick Setup Guide first.

Supplied CD-ROM for Windows Vista™

You can find the information listed below on the Windows Vista™ CD-ROM. For the Initial Setup movie, see the other CD-ROM that is supplied with your machine.



Install Printer Driver

Install the printer driver for Windows Vista™.



Install Other Drivers or Utilities

Install optional drivers, utilities and Network management tools.



Documentation

View the Printer User's Guide and Network User's Guide.

You can also view the manuals by accessing the Brother Solutions Center.



On-Line Registration

Register your product on-line.



Brother Solutions Center

The Brother Solutions Center (<http://solutions.brother.com>) is a one-stop resource for all your printer support needs. Download the latest drivers and utilities for your printer, read FAQs and troubleshooting tips, or learn about printer solutions.



Supplies Information




Visit our web site for original/genuine Brother supplies at <http://www.brother.com/original/>

STEP 2

Installing the Printer Driver

Follow the instructions on this page for your interface.
For the latest drivers, documentation, and to find the best solution for your problem, access the Brother Solution Center directly from the CD-ROM / Driver or visit <http://solutions.brother.com>.

Windows®

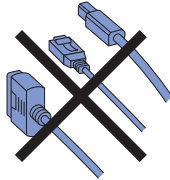
	For USB interface cable users.....	4
	For parallel interface cable users.....	6
	For network interface cable users	8
	■ For Peer-to-Peer network printer users	8
	■ For shared network printer users	10

The printer illustrations and screens are based on HL-5250DN.

For USB interface cable users

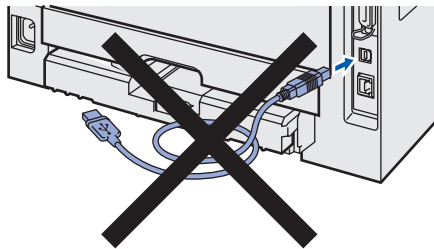
Improper Setup

DO NOT connect the interface cable. Connecting the interface cable is done when installing the driver.

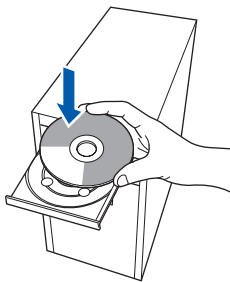


Installing the driver and connecting the printer to your computer

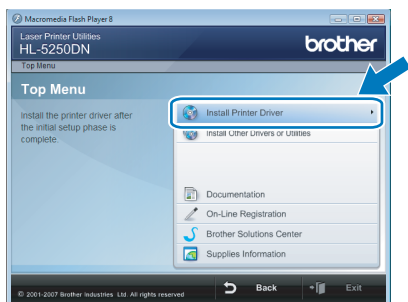
- 1 Make sure the USB interface cable is **NOT** connected to the printer, and then begin installing the driver. If you have already connected the cable, remove it.



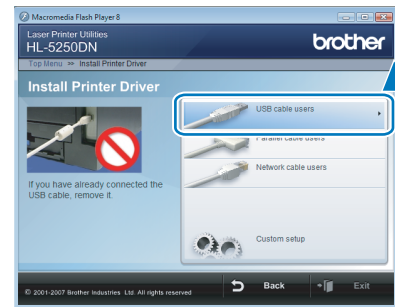
- 2 Turn on your computer. (You must be logged on with Administrator rights)
- 3 Put the supplied CD-ROM into your CD-ROM drive. The opening screen will appear automatically. Choose your printer model and the language.



- 4 Click **Install Printer Driver** on the menu screen.



- 5 Click **USB cable users**.

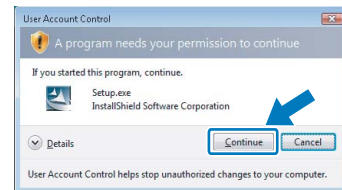


Note

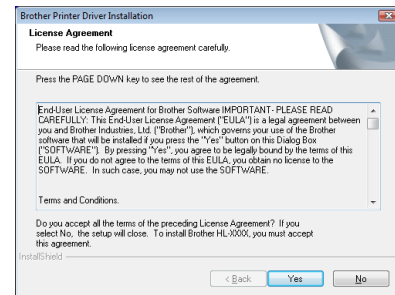
If you want to install the PS driver¹ (Brother's BR-Script Driver), choose **Custom setup** and then follow the on-screen instructions. When the **Select Components** screen appears, check **PS(PostScript Emulation) Driver**, and then continue following the on-screen instructions.

¹ The PS driver is not available for HL-2030, HL-2040 and HL-2070N.

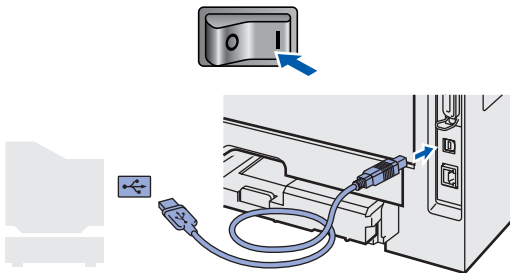
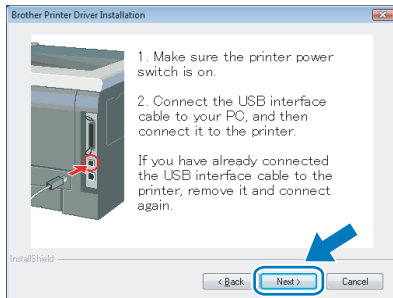
- 6 When the **User Account Control** screen appears, click **Continue**.



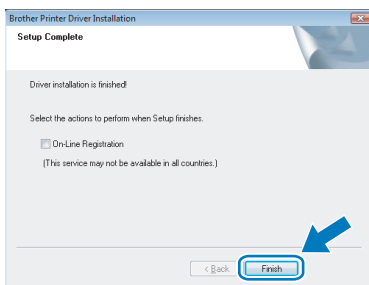
- 7 When the **License Agreement** window appears, click **Yes** if you agree to the License Agreement.



- 8** When this screen appears, make sure the printer power switch is on. Connect the USB interface cable to your computer, and then connect it to the printer. Click **Next**.




- 9** Click **Finish**.



 **Note**

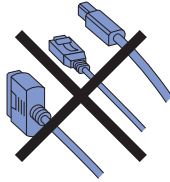
- If you want to register your product on-line, check **On-Line Registration**¹.
- ¹ **On-Line Registration** is not available for HL-7050N.
- If the printer cannot print after installing the printer driver, turn off the printer power switch and turn it on again.

 **Setup is now complete.**

For parallel interface cable users

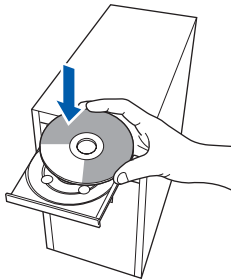
⊘ Improper Setup

DO NOT connect the interface cable.
Connecting the interface cable is done when installing the driver.

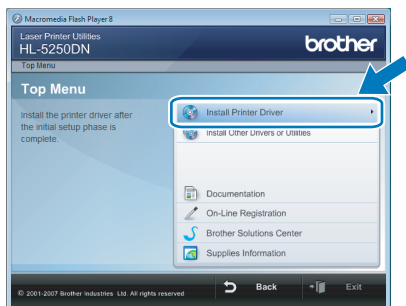


Installing the driver and connecting the printer to your computer

- 1 Turn on your computer. (You must be logged on with Administrator rights)
- 2 Put the supplied CD-ROM into your CD-ROM drive. The opening screen will appear automatically. Choose your printer model and the language.



- 3 Click **Install Printer Driver** on the menu screen.



- 4 Click **Parallel cable users**.

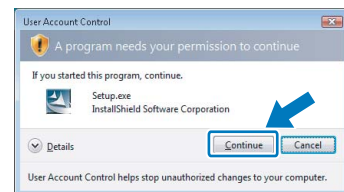


Note

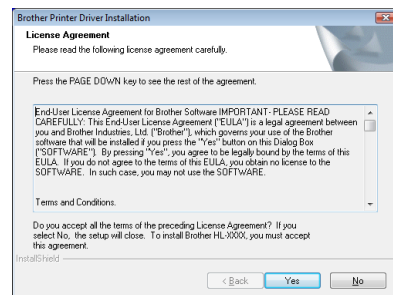
If you want to install the PS driver¹ (Brother's BR-Script Driver), choose **Custom setup** and then follow the on-screen instructions. When the **Select Components** screen appears, check **PS(PostScript Emulation) Driver**, and then continue following the on-screen instructions.

¹ The PS driver is not available for HL-2040 and HL-2070N.

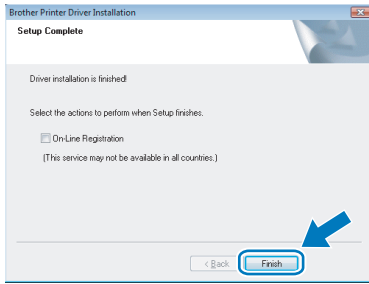
- 5 When the **User Account Control** screen appears, click **Continue**.



- 6 When the **License Agreement** window appears, click **Yes** if you agree to the License Agreement.



7 Click **Finish**.



Note

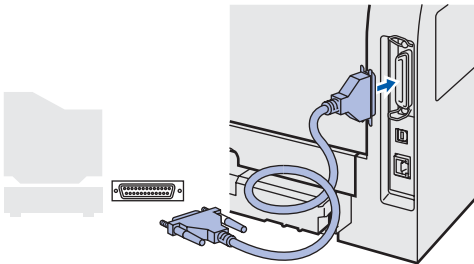
If you want to register your product on-line, check **On-Line Registration**¹.

¹ **On-Line Registration** is not available for HL-7050N.

8 Turn off the printer power switch.



9 Connect the parallel interface cable to your computer, and then connect it to your printer.



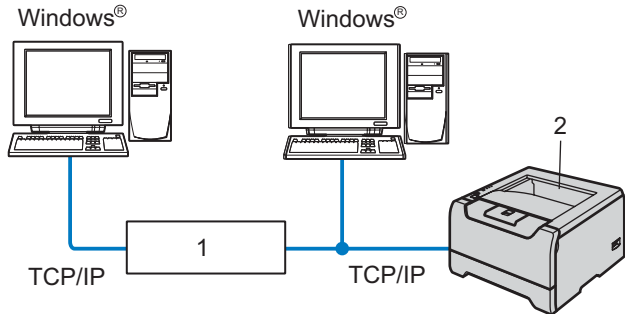
10 Turn on the printer power switch.



OK! Setup is now complete.

For network interface cable users

For Peer-to-Peer network printer users



- 1 Router
- 2 Network printer

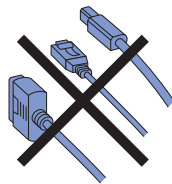


Note

- If you are going to connect the printer to your network, we recommend that you contact your system administrator prior to installation or see the *Network User's Guide* on the CD-ROM.
- If you are using *Personal Firewall* software (e.g. *Windows Firewall*), disable it. Once you are sure that you can print, restart your *Personal Firewall* software.

⊘ Improper Setup

DO NOT connect the interface cable. Connecting the interface cable is done when installing the driver.

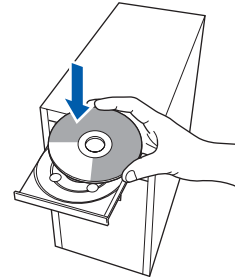


Connecting the printer to your network and installing the driver

- 1 Turn on your computer. (You must be logged on with Administrator rights)

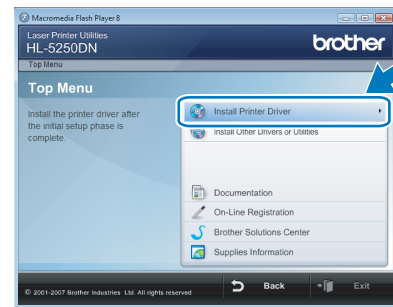
2

Put the supplied CD-ROM into your CD-ROM drive. The opening screen will appear automatically. Choose your printer model and the language.



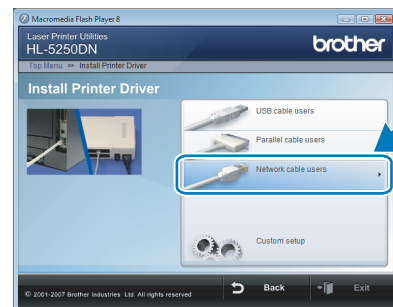
3

Click **Install Printer Driver** on the menu screen.



4

Click **Network cable users**.

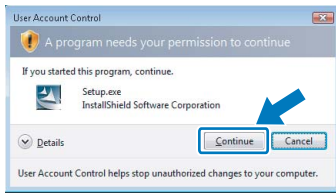


Note

If you want to install the PS driver¹ (Brother's BR-Script Driver), choose **Custom setup** and then follow the on-screen instructions. When the **Select Components** screen appears, check **PS(PostScript Emulation) Driver**, and then continue following the on-screen instructions.

¹ The PS driver is not available for HL-2070N.

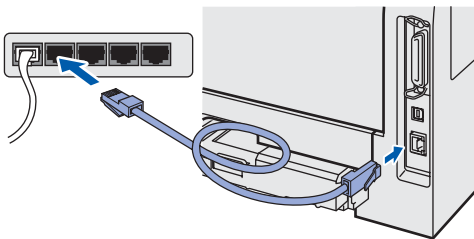
- 5** When the **User Account Control** screen appears, click **Continue**.



- 6** Turn off the printer power switch.



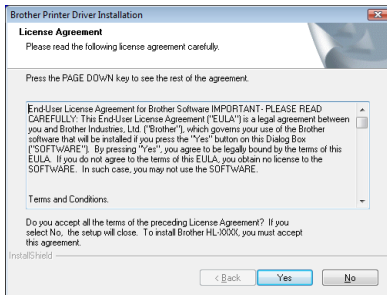
- 7** Connect the network interface cable to the printer, and then connect it to a free port on your hub.



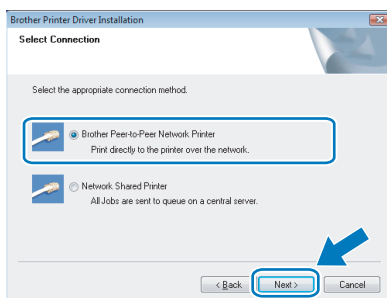
- 8** Turn on the printer power switch.



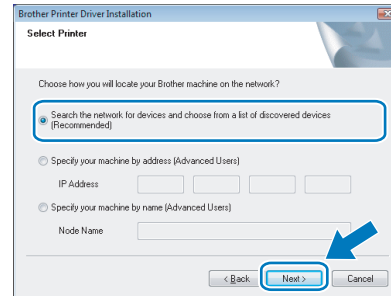
- 9** When the **License Agreement** window appears, click **Yes** if you agree to the License Agreement.



- 10** Choose **Brother Peer-to-Peer Network Printer**, and then click **Next**.

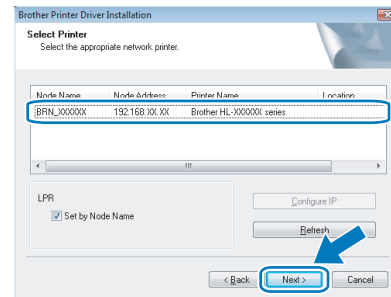


- 11** Choose **Search the network for devices and choose from a list of discovered devices (Recommended)**. Or enter your printer's IP address or its node name. Click **Next**.

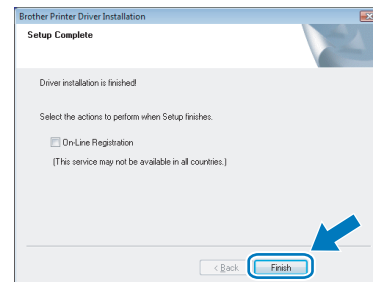


Note Contact your administrator if you do not know the printer's IP address or node name.

- 12** Choose your printer, and then click **Next**.



- 13** Click **Finish**.



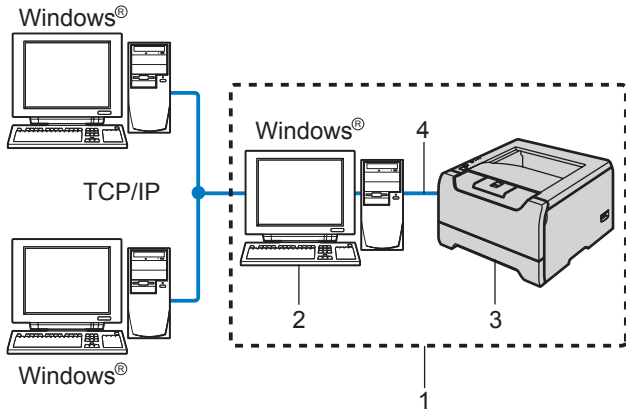
Note If you want to register your product on-line, check **On-Line Registration**¹.

¹ **On-Line Registration** is not available for HL-7050N.



Setup is now complete.

For shared network printer users



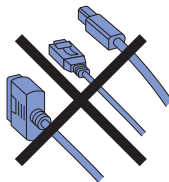
- 1 Network Shared
- 2 Also known as "Server" or "Printer server"
- 3 Printer
- 4 TCP/IP, USB or Parallel

Note

If you are going to connect to a shared printer on your network, we recommend that you ask your system administrator about the queue or share name for the printer prior to installation.

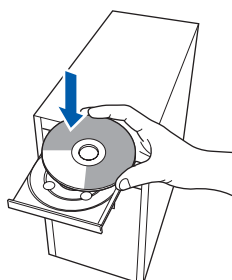
Improper Setup

DO NOT connect the interface cable. Connecting the interface cable is done when installing the driver.

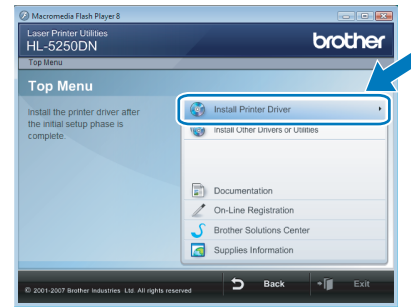


Installing the driver and choosing the correct printer queue or share name

- 1 Turn on your computer. (You must be logged on with Administrator rights)
- 2 Put the supplied CD-ROM into your CD-ROM drive. The opening screen will appear automatically. Choose your printer model and the language.



- 3 Click **Install Printer Driver** on the menu screen.



- 4 Click **Network cable users**.

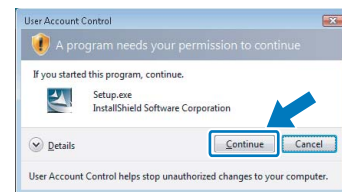


Note

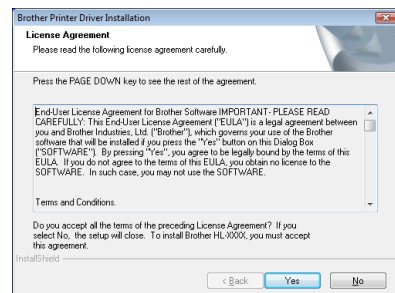
If you want to install the PS driver¹ (Brother's BR-Script Driver), choose **Custom setup** and then follow the on-screen instructions. When the **Select Components** screen appears, check **PS(PostScript Emulation) Driver**, and then continue following the on-screen instructions.

¹ The PS driver is not available for HL-2070N.

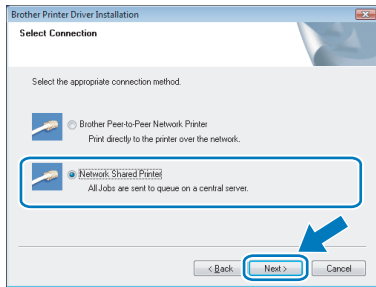
- 5 When the **User Account Control** screen appears, click **Continue**.



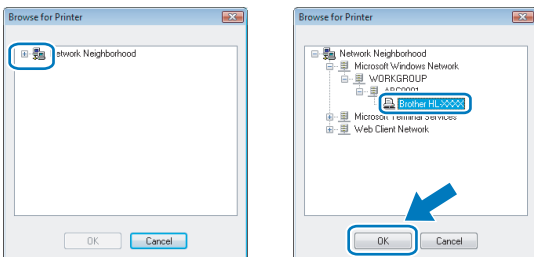
- 6 When the **License Agreement** window appears, click **Yes** if you agree to the License Agreement.



- 7** Choose **Network Shared Printer**, and then click **Next**.



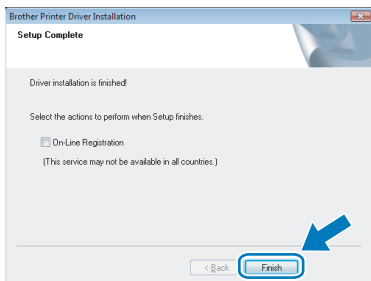
- 8** Choose your printer's queue, and then click **OK**.



Note

Contact your administrator if you do not know the location or the name of the printer in the network.

- 9** Click **Finish**.



Note

If you want to register your product on-line, check **On-Line Registration**¹.

¹ **On-Line Registration** is not available for HL-7050N.



Setup is now complete.



BRAdmin Light utility

The BRAdmin Light is a utility for initial setup of Brother network connected devices. It can also search for Brother products on your network, view the status and configure basic network settings, such as IP address. For more information on BRAdmin Light, visit us at <http://solutions.brother.com>.

Note

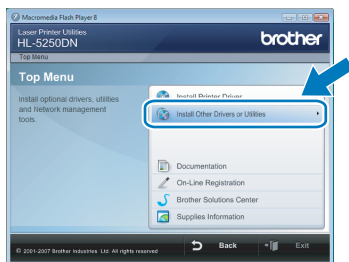
If you require more advanced printer management, use the latest Brother BRAdmin Professional utility version that is available as a download from <http://solutions.brother.com>.

Installing the BRAdmin Light configuration utility

Note

The default password for the print server is 'access'. You can use BRAdmin Light to change this password.

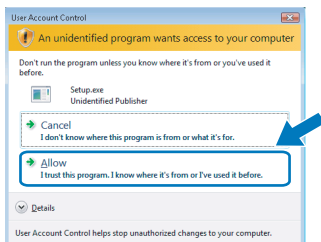
- 1 Click **Install Other Drivers or Utilities** on the menu screen.



- 2 Click **BRAdmin Light** and follow the on-screen instructions.



- 3 When the **User Account Control** screen appears, click **Allow**.

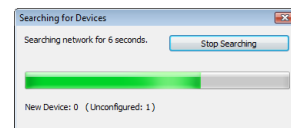


Setting your IP address, Subnet Mask and Gateway using BRAdmin Light

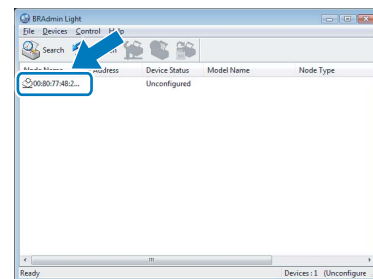
Note

If you have a DHCP/BOOTP/RARP server in your network, you don't have to do the following operation. Because the print server will automatically obtain its IP address.

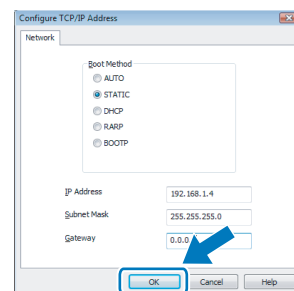
- 1 Start BRAdmin Light. It will search for new devices automatically.



- 2 Double-click the unconfigured device.



- 3 Choose **STATIC** for the **Boot Method**. Enter the **IP Address**, **Subnet Mask** and **Gateway**, and then click **OK**.



- 4 The address information will be saved to the printer.

Computer requirements

Computer Platform & Operating System Version	Processor Minimum Speed	Minimum RAM	Recommended RAM	Available Hard Disk Space
Windows Vista™	Intel® Pentium® 4 or equivalent 64-bit supported CPU	512 MB	1 GB	50 MB

Trademarks

The Brother logo is a registered trademark of Brother Industries, Ltd.

Microsoft, MS-DOS and Windows are registered trademarks of Microsoft Corporation in the U.S. and other countries.

Windows Vista is either a registered trademark or trademark of Microsoft Corporation in the United States and/or other countries.

PostScript and PostScript3 are trademarks of Adobe Systems Incorporated.

All other terms and brand and product names mentioned in this Windows Vista™ Installation Guide are registered trademarks of their respective companies.

Compilation and Publication

This manual has been compiled and published, under the supervision of Brother Industries Ltd., covering the latest product descriptions and specifications.

The contents of this manual and the specifications of this product are subject to change without notice.

Brother reserves the right to make changes without notice in the specifications and materials contained herein and shall not be responsible for any damages (including consequential) caused by reliance on the materials presented, including but not limited to typographical and other errors relating to the publication.

This product is designed for use in a professional environment.

Copyright and License

© 2007 Brother Industries, Ltd. © 1998-2007 TROY Group, Inc. © 1983-2007 PACIFIC SOFTWARES INC. This product includes the "KASAGO TCP/IP" software developed by Elmic Systems, Inc. © 2007 Devicescape Software, Inc. ALL RIGHTS RESERVED.

brother®

ENG